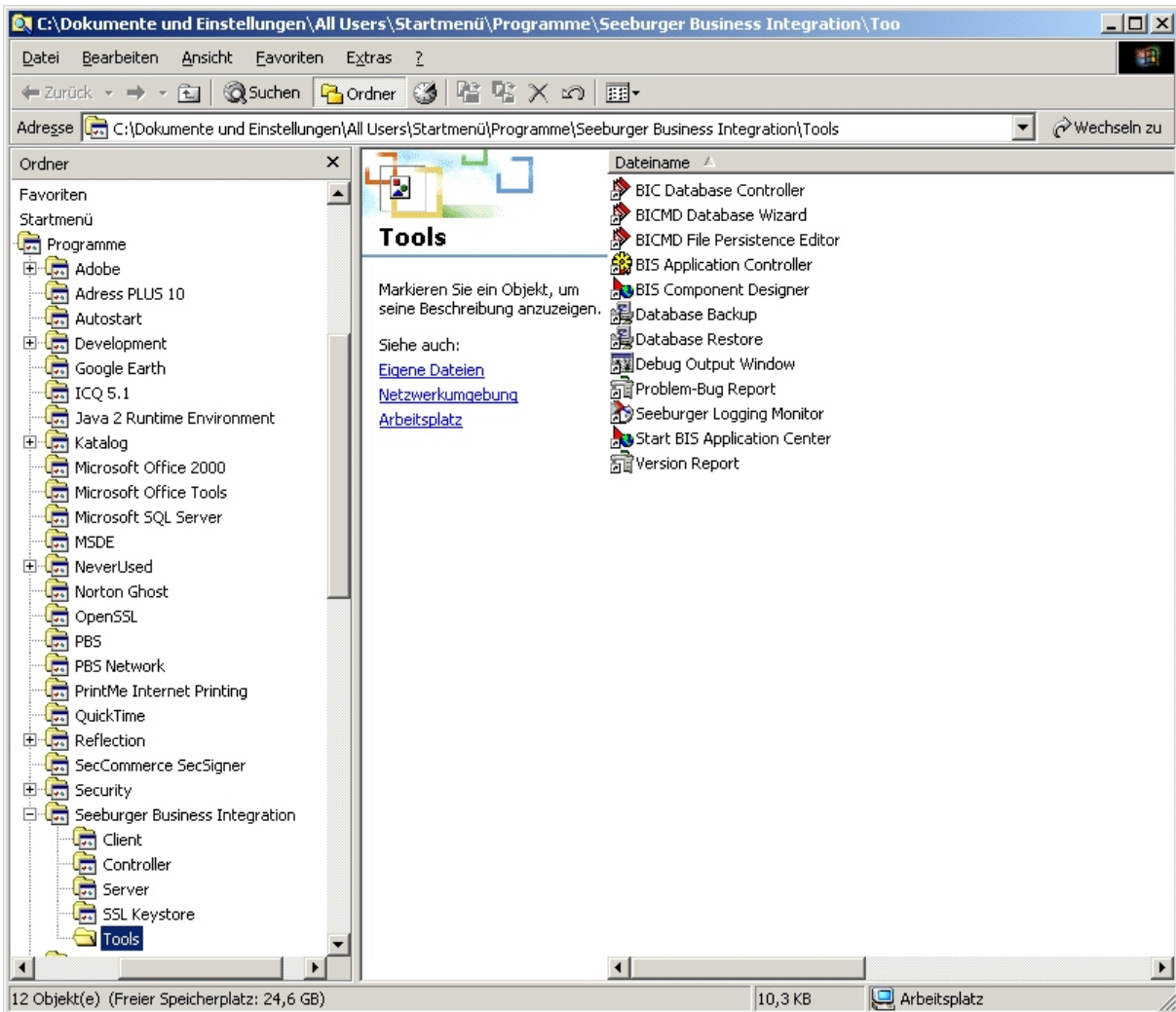


Sicherung: Seeburger Business Integration

- Über Explorer nach
Start-> Programme-> Seeburger Business Integration->Tools

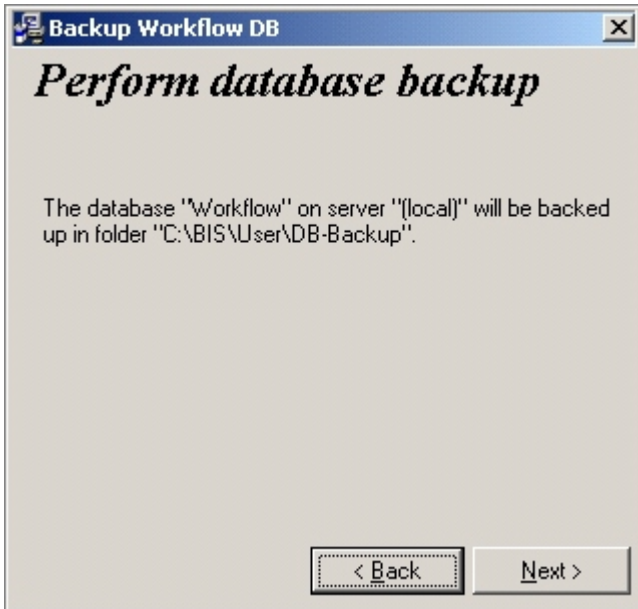


- Database Backup auswählen, hier nun aktuelles Password eingeben, Backupdirectory auswählen, dann auf Next

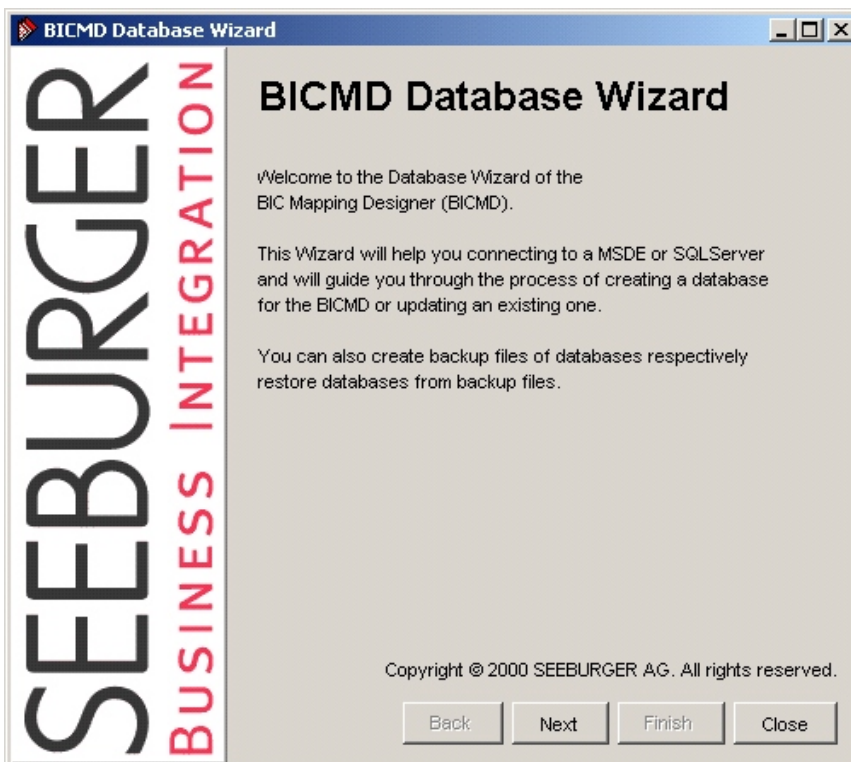


■ — Sicherung: Seeburger Business Integration — ■

3. Zusammenfassung wird angezeigt, mit Next bestätigen, Workflowdatenbank wird gesichert. Dies beinhaltet Sendeaufträge, Konfigurationen, Partneradresse usw.



4. Sicherung der Mappingdatenbank
In der o.g Programmgruppe den Punkt BICMD Database Wizard auswählen.
Mit Next bestätigen



Sicherung: Seeburger Business Integration

5. Aktuelles Passwort eingeben, mit Next weiter

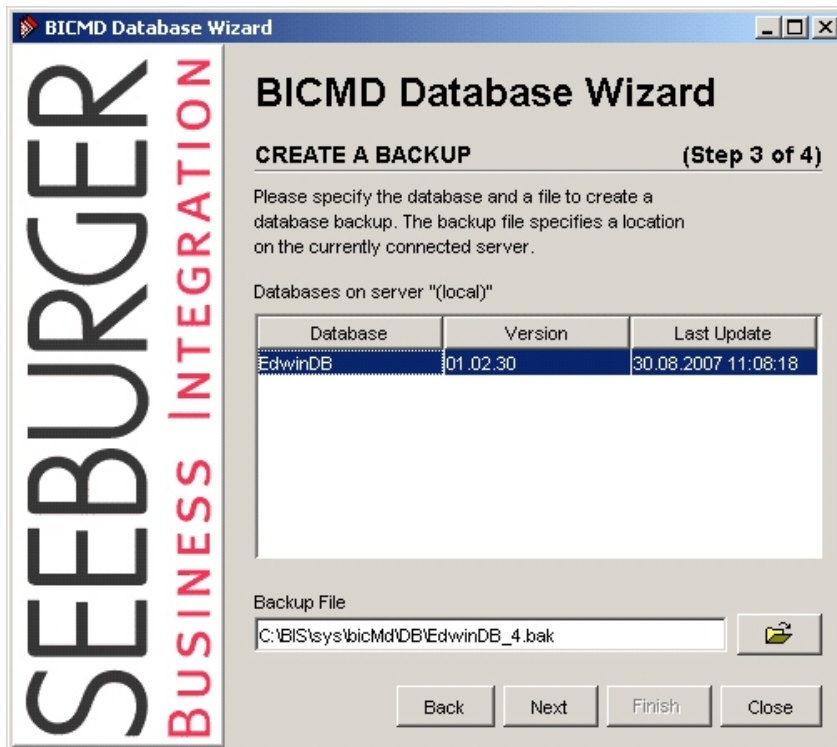
The screenshot shows the 'BICMD Database Wizard' window at 'Step 1 of 4: CONNECT TO SERVER'. The window title is 'BICMD Database Wizard'. On the left side, there is a vertical logo for 'SEEBURGER BUSINESS INTEGRATION'. The main content area contains the following text: 'Please insert the name of the server with the MSDE or SQLServer installation. The specified user must have administrative privileges. To connect to a newly installed local MSDE you can use the default values.' Below this text are three input fields: 'Server' with '(local)', 'User' with 'sa', and 'Password' which is empty. At the bottom of the window are four buttons: 'Back', 'Next', 'Finish', and 'Close'. The 'Next' button is highlighted with a dotted border.

6. Im nächsten Fenster dann die Operation auswählen, hier Create Backup, dann Next

The screenshot shows the 'BICMD Database Wizard' window at 'Step 2 of 4: CHOOSE AN OPERATION'. The window title is 'BICMD Database Wizard'. On the left side, there is a vertical logo for 'SEEBURGER BUSINESS INTEGRATION'. The main content area contains the following text: 'Please choose the operation that you want to perform on the currently connected server.' Below this text are six radio button options: 'Create New Database', 'Update an Existing Database', 'Create Backup', 'Restore Database From the Backup File', 'Delete Database', and 'Switch Database'. The 'Create Backup' option is selected and highlighted with a dotted border. At the bottom of the window are four buttons: 'Back', 'Next', 'Finish', and 'Close'. The 'Next' button is highlighted with a dotted border.

Sicherung: Seeburger Business Integration

7. Alle möglichen, zu sichernden Datenbank werden angezeigt, EDWINDB auswählen, Dateiname und Pfad angeben ... dann Next



8. Zusammenfassung wird angezeigt, mit Finish wird Sicherung gestartet.

